

American Driving Society

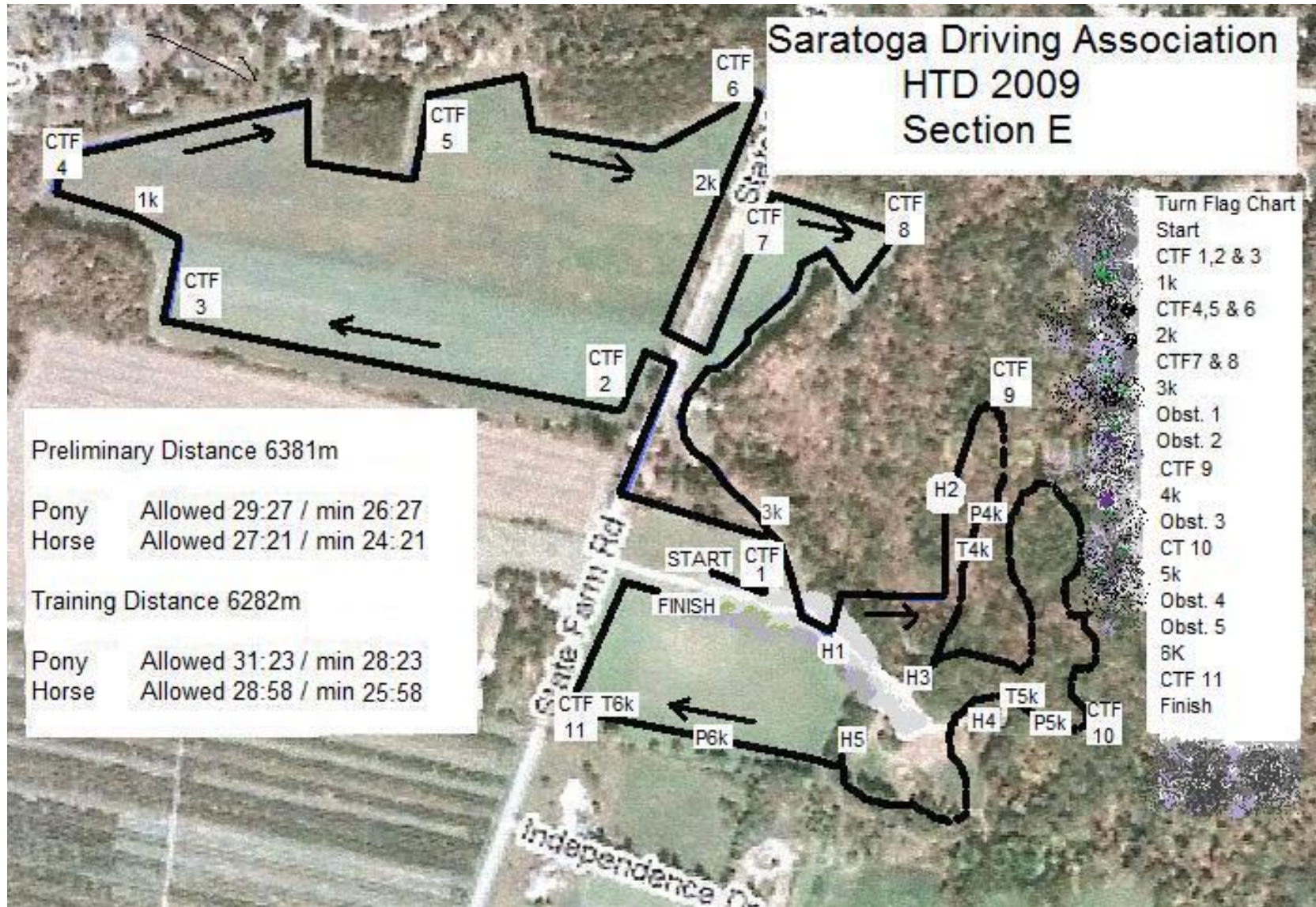
Navigating 101

By Marc Johnson

Work pages



Saratoga Driving Association HTD 2009 Section E



Preliminary Distance 6381m

Pony Allowed 29:27 / min 26:27
Horse Allowed 27:21 / min 24:21

Training Distance 6282m

Pony Allowed 31:23 / min 28:23
Horse Allowed 28:58 / min 25:58

- Turn Flag Chart
- Start
 - CTF 1, 2 & 3
 - 1k
 - CTF 4, 5 & 6
 - 2k
 - CTF 7 & 8
 - 3k
 - Obst. 1
 - Obst. 2
 - CTF 9
 - 4k
 - Obst. 3
 - CT 10
 - 5k
 - Obst. 4
 - Obst. 5
 - 6K
 - CTF 11
 - Finish

- Example CDE Distances and Times

- “Book” speeds are easily found in the “Quick Reference Guide for CDE’s” at the rear of the rulebook. It is important to know the speeds that are expected for your division.

-
- Distances: Advanced Intermediate Preliminary Training
- Section A 4000 4000 4000 4000
- Section D 1000 1,000 1000 1000
- Section E 7425 6826 5837 4937
- **Section A**
- Speed Horse 15kph 15kph 14kph 14kph
- Allowed Horse 16:00 16:00 17:08 17:08
- Minimum 14:00 14:00 15:08 15:08
- Speed Pony 14kph 14kph 13kph 13kph
- Allowed Pony 17:08 17:08 18:28 18:28
- Minimum 15:08 15:08 16:28 16:28
- **Section D**
- Speed Horse 7kph 6.5kph 6kph 6kph
- Allowed Horse 8:34 9:14 10:00 10:00
- Speed Pony 6kph 5.5kph 5kph 5kph
- Allowed Pony 10:00 10:54 12:00 12:00
- **Section E**
- Speed Horse 14kph 14kph 14kph 13kph
- Allowed Horse 31:47 26:50 25:02 22:47
- Minimum 28:47 23:50 22:02 19:47
- Speed Pony 13kph 13kph 13kph 12kph
- Allowed Pony 34:16 31:30 26:56 24:40
- Minimum 31:16 28:30 23:56 21:40

Carriage time Chart

Section A	Minimum	Optimum	Allowed
1k			
2k			
3k			
Finish			

Section D

Section E	Minimum	Optimum	Allowed
1k			
2k			
3k			
4k			
5k			
6k			
7k			
Finish			

Times by Kilometer

- 6 KPH (60 divided by 6 = 10) 1k= 10:00
- 7 KPH (60 divided by 7 = 8.57) 1k= 8:34
- 8 KPH (60 divided by 8 = 7.50) 1k= 7:30
- 9 KPH (60 divided by 9 = 6.66) 1k= 6:40
- 10 KPH (60 divided by 10= 6.00) 1k= 6:00
- 11 KPH (60 divided by 11= 5.45) 1k= 5:27
- 12 KPH (60 divided by 12=5.00) 1k= 5:00
- 13 KPH (60 divided by 13= 4.61) 1k= 4:37
- 14 KPH (60 divided by 14= 4.28) 1k= 4:17
- 15 KPH (60 divided by 15=4.00) 1k= 4:00

Important rules that Navigators must know

1. The vehicle must be stopped before a navigator may get down to adjust equipment between obstacles.(article 945.6.1 page 205)
2. A navigator may not handle reins. In an obstacle, an animal lead by the reins will cause a 20 point penalty. A stationary animal may be held by the bit end of the reins.
(article 917.2.4 page 177) (article 926.3.5 page 187) (article 946.3.6 page 207)
3. A navigator may touch one foot down in an obstacle. Two feet touching the ground or an element of the obstacle will cause a 10 point penalty. That penalty is assessed for each time a navigator or groom gets down. A navigator or groom is not required to follow through the remainder of the gates once down. (article 946.3.1 through article 946.3.4 page 207)
4. A navigator may not touch a dislodgeable element without a 10 point penalty (article 946.3.5 page 207)
5. In the event of a hold on course, the competitor must remain stationary and will be started on the next full or half minute once the course has become cleared. (note: the judge at the end of section E should be notified by the competitor of all holds) (article 946.9.2 page 208)
6. Do not ask questions of people on or around the course as this could be perceived as outside assistance. (article 926.2.4 page)

- **3. Summary of Penalties in Competition B**
- 3.1Article 902.5.1 .. Contravening the Rules
.....Elimination
- 3.2Article 918.1.2 . Vehicles below weight at end of E or
below width at Start of EElimination
- 3.3Article 945.2, .6 Required persons not on vehicle passing
through a Compulsory Turning Flag, or
- the start and finish of each Section, each occasion ... 10 penalties
- 3.4Article 902.8.2, 924.3 Horses unfit to continue at end of Section D
.....Elimination
- 3.5Article 942.5.3 .. Dislodging a dislodgeable element
2 penalties
- 3.6Article 942.5.5 .. Preventing a dislodgeable element being dislodged
.. 10 penalties
- 3.7Article 943.3.5 .. Motorised vehicles or bicycles in obstacles
- 1st incidentWarning
- 2nd incident.....Yellow Card
- 3.8Article 944.2.6 .. Exceeding the Time Limit in any Section
.....Elimination
- 3.9Article 945.8.1 .. Finishing Section E with missing or disconnected
pole strap or trace for each occurrence 10 penalties
- 3.10 ..Article 944.5.1 .. Total time over Time Allowed in all Sections ... 0.2
penalties/sec.
- 3.11 ..Article 944.5.2 .. Total time under Minimum Time in
Sections A and E 0.2 penalties/sec.
- 3.12 ..Article 949.1.1 .. Total time in obstacles..... 0.2
penalties/sec.
- 3.13 ..Article 945.2.2 .. Failing to pass through Compulsory Turning Flags
and Obstacles in correct sequenceElimination
- 3.14 ..Article 945.3 Each deviation from course after last obstacle
10 penalties
- 3.15Article 941.5, 945.4 Incorrect pace 1 penalty for
every 5 sec.
- 3.16Article 944.4.2 Not ready to start Section A 0.2
penalties/sec
- 3.17Article 945.5 ... Intentional break of pace in Section D
.....Elimination
- 3.18.... Article 945.6.1. Dismounting while
moving.....10 penalties
- 3.19.... Article 946.7.1.Failing to stop for leg over pole, lead bar or shaft.....
Elimination
- Article 946.7.2 Failing to stop for leg over trace20
penalties
- 3.20.... Article 917.2.4.Groom handling reins when vehicle not
stationary....20 penalties
- 3.21.... Article 945.8.3.Finishing Section E with fewer horses than required.
Elimination
- 3.22.... Article 945.8.3.Finishing Section E with missing wheel
Elimination
- 3.23.... Article 945.8.2.Finishing Section E with broken or
disconnected shaft or pole..... Elimination
- 3.24.... Article 946.2.1.Failing to pass through entry flags of an obstacle
Elimination
- 3.25.... Article 946.8.3.Failing to pass through exit flags of an obstacle
within 5 minutes Elimination
- 3.26.... Article 946.2.3.Passing a gate in wrong sequence or direction
Elimination
- 3.27.... Article 946.2.4. For correcting each error of course in an obstacle
.....20 penalties
- 3.28.... Article 946.2.5.Passing between exit flags before
completing obstacle Elimination
- 3.29.... Article 946.3.1.Groom(s) dismounting in an obstacle,each occasion
10 penalties
- 3.30.... Article 946.3.3. Competitor dismounting in an
obstacle.....20 penalties
- 3.31.... Article 946.5.... A vehicle turning over in an
obstacle.....60 penalties
- 3.32.... Article 946.4.... Disconnecting and leading through an obstacle
Elimination
- 3.33.... Article 946.8.3. Exceeding Time Limit in an obstacle (5 min.).....
Elimination
- 3.34.... Article 926..... Outside Assistance.....
Elimination
- 3.35.... Article 918.1.3. No breeching with an vehicle with no brakes
.....10 penalties
- 3.36.... Article 926.3.5.Groom leading a horse through an obstacle
.....20 penalties
- 3.37.... Article 917.2....Substitution of a groom.....
Elimination
- 3.38.... Article 917.6.1. Driver or groom wearing shorts
.....10 penalties
- 3.39.... Article 917.6.2. No protective headgear on Section E
Elimination
- 3.40.... Article 946.3.4.Two feet on an element of
Obstacle.....10 penalties
- 3.41.... Article 913.3.... Contravening the rules on
advertising.....20 penalties
- 3.42.... Article 945.1.... Contravening the rule on the use of the
whip.....20 penalties
- 3.43.... Article 944.4.3.Starting before the signal and returning
when recalled10 penalties
- 3.44.... Article 944.4.4. Competitor fails to stop when recalled
Elimination

Quick Reference Guide for CDEs

Training & Preliminary Part One

	TRAINING	PRELIMINARY
ENTRIES: Articles 905.12 & 921	Open to either drivers or horses that have not completed more than one CDE above Training division.	Open to any driver who has completed at least two Training division CDEs, or DTs. Suitable for horses in regular training program.
OFFICIALS: Articles 906, 907, 947	At least two judges, one TD, one Vet. The TD may judge cones.	
FARRIER: Article 941.2.4	Either on site or on call	
VETERINARIAN Articles 908, 924, 947.1.1	Minimum one - two areas to be covered – Rest Stop (End of D) for clinical observation and Finish (End of E). See Article 908.3.6 for details.	
DURATION: Articles 904.2 – 904.3	2 or 3 day CDE	
VEHICLE: Article 918	No standard weight or track width in Competitions A and C. Competition B see Article 918.1.12	
	Pneumatic tires allowed	Iron or solid rubber tires
	Reflectors required; lamps required for Competition A only when brackets fitted. Optional for Competition C	
HARNESS: Articles: 919	Sidechecks allowed (Article 919.4)	No type of check reins allowed (see Article 919.4)
PRESENTATION: Article 935.6	May be judged on the move or at the halt.	
DRIVEN DRESSAGE: Articles: 931, 932.2	ADS Tests to be driven from memory	
MARATHON SECTIONS: Article 941.1	3 sections; A, D, E. Approximately 1 km. per obstacle required in Section E	
MARATHON DISTANCE: Articles 941.1.6-9	Distance 8 – 12 km. total	Distance 8 – 14 km. total
	VSE may compete on a shortened course – 941.1.1	
MARATHON MARKERS Article 941.4.1	Diamond – white or black background	Square – green background
	VSE – hexagonal – purple background, together with division markers if a separate course	
PACE – Articles 941.1, 946.1.1	Section A – any pace; Section D – walk; Section E – trot only	
	Obstacles – walk/trot only	Obstacles – any pace
	Section E, walk or trot only from last obstacle or last 500m. to end of Section E (941.1 and 941.5)	

Quick Reference Guide for CDEs

Training & Preliminary Part Two

	TRAINING				PRELIMINARY			
	Sec. A		Sec. D		Sec. E		Sec. E	
SPEEDS (Max.) (kph) Articles 914.2.3 and 941								
Horses: > 148 cm unshod	14	6	13	14	6	14	14	
Pony: <u>120</u> cm to 148cm	13	5	12	13	5	13	13	
Small pony: 99cm-< <u>120</u> cm	12	5	11	12	5	12	12	
VSE: < 99 cm.	9	3.5	9	9	3.5	9	9	
PEOPLE ON CARRIAGE: Articles: 917.2.9, 918.1.1, 914.1.2	Navigator/groom required for Competition B. No passengers. Age limitations - Article 913.1. Grooms optional in Competitions A and C for single turnouts. One groom always required for pairs and tandems; two grooms for four-in-hands. VSE single – optional; pair, tandem, four-in-hand 1 required							
MARATHON OBSTACLES: Articles: 942.1, 942.4, 941.1.6-8	Max: Obstacles = 5; gates = 3 per obstacle. Easy routes. <u>Time not recorded.</u>				Max: Obstacles 6; gates = 4 per obstacle. Easy alternative route.			
	No gates on significant slopes							
MARATHON TERRAIN Article 941.6.2	No Compulsory Turning Flags on significant slopes. Alternate easy route to be provided.							
MARATHON TIMES: based on time allowed (Ta). Article 944.2	<u>Sections</u>		<u>Minimum Time</u>		<u>Time Limit</u>			
	A		Ta – 2 min.		20% plus Ta			
	D		none		2 x Ta			
	E		Ta – 3 min.		2 x Ta			
MARATHON SCORING: Articles: 946.8, 946	Obstacles times not recorded. Time taken for 5 minute Time Limit only.				Obstacles timed to 2 decimal places. All obstacles times added together, then multiplied by 0.2 to determine total time penalties in obstacles.			
COMPETITION C: Articles: 951, 952, 953 <i>S=Single; P=Pair;</i> <i>T=Tandem; 4=four-in-hand</i>	Maximum speed (mpm)		Minimum clearance (cm.)		Maximum speed (mpm)		Minimum clearance (cm.)	
Horse / pony	<u>S-P</u>	<u>T-4</u>	<u>S-P</u>	<u>T-4</u>	<u>S-P</u>	<u>T-4</u>	<u>S-P</u>	<u>T-4</u>
VSE	180	170	40	50	200	190	35	45
	160	150	35	45	180	170	30	40
Competition C - OBSTACLES: Articles 952.1- .4	No water, bridge or Zig-zag				No water.			

• Marathon Spares and Equipment

- Electrical Tape
- Extra Strap
- Extra Whip
- Knife or Multi - Tool
- Stop Watch
- Driver Safety Belt
- Lead Rope
- Halter(s)
- Water (for driver and navigator)

